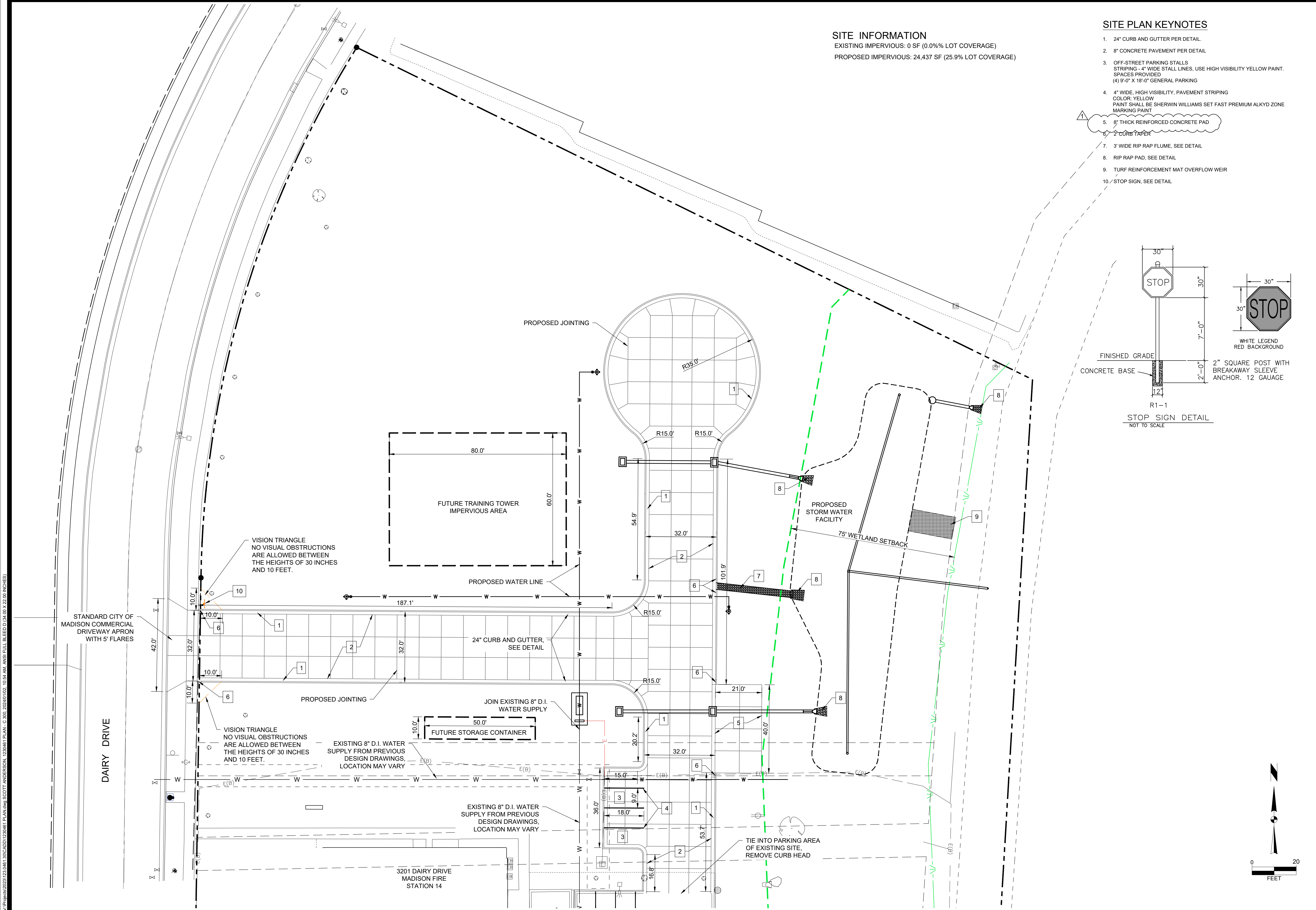
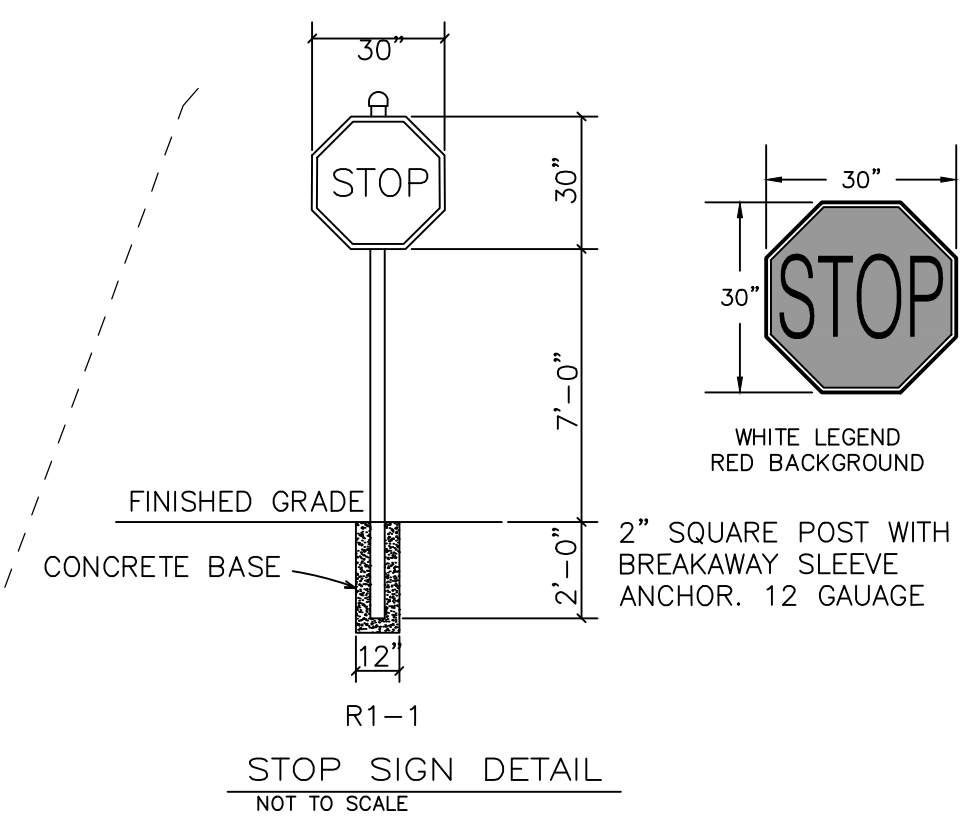


W:\Projects\2023\123\0461\300\DD\123\0461\PLAN.dwg SCOTT ANDERSON, 12/24/23, 10:54 AM, ANS FULL BLEED (0.00 x 22.00 INCHES)



**SITE INFORMATION**  
 EXISTING IMPERVIOUS: 0 SF (0.0% LOT COVERAGE)  
 PROPOSED IMPERVIOUS: 24,437 SF (25.9% LOT COVERAGE)

- SITE PLAN KEYNOTES**
- 24" CURB AND GUTTER PER DETAIL.
  - 8" CONCRETE PAVEMENT PER DETAIL.
  - OFF-STREET PARKING STALLS STRIPING - 4" WIDE STALL LINES, USE HIGH VISIBILITY YELLOW PAINT. SPACES PROVIDED (4) 9'-0" X 18'-0" GENERAL PARKING
  - 4" WIDE, HIGH VISIBILITY, PAVEMENT STRIPING COLOR: YELLOW PAINT SHALL BE SHERWIN WILLIAMS SET FAST PREMIUM ALKYD ZONE MARKING PAINT
  - 8" THICK REINFORCED CONCRETE PAD
  - 2" CURB TAPER
  - 3' WIDE RIP RAP FLUME, SEE DETAIL.
  - RIP RAP PAD, SEE DETAIL.
  - TURF REINFORCEMENT MAT OVERFLOW WEIR
  - STOP SIGN, SEE DETAIL.



#1	MARK	ADDENDUM #1	REVISION	DATE	BY
				1-3-2024	SJA

Engineer:	SJA	Checked By:	SJA	Scale:	1" = 20'
Technician:	MW	Date:	10-31-2023	T-R-S:	TTN-RRW-SS

**FIRE STATION 14 TRAINING SITE PHASE 1- CITY OF MADISON PW CONTRACT #9239**  
**SITE PLAN**  
**MADISON, WISCONSIN**  
**SNYDER & ASSOCIATES, INC. |**



Project No: 123.0461.30  
 Sheet C 300

Project No: 123.0461.30  
 Sheet C 300

5010 VOEGES ROAD  
 MADISON, WISCONSIN 53718  
 608-838-0444 | www.snyder-associates.com